

AVAILABLE SITE

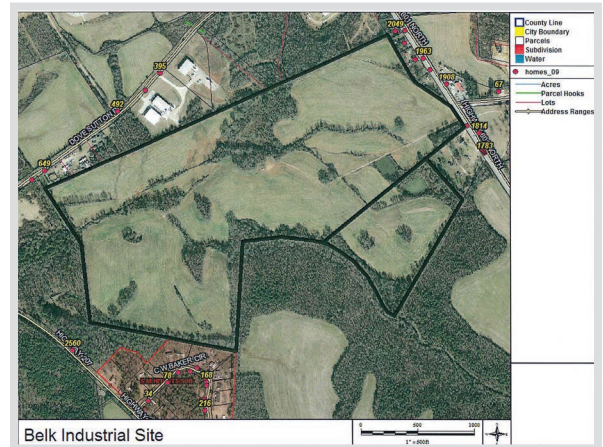


105 Green Street
Chesterfield, SC 29709
843-623-6500
www.chesterfieldcountysc.org

BELK INDUSTRIAL SITE



Location	US 601 North, Pageland, SC 29728
Purchase Price	\$9,500/acre
Site Size	127.50 acres, developable 124.87 acres
Water	Town of Pageland - 8" line
Sewer	Town of Pageland - 10" line
Electricity	Lynches River Electric Cooperative
Natural Gas	Dominion Energy
Fiber	Sandhill Telephone Cooperative
Connectivity	
Highway	Highway 601 N (4 lanes)
Interstate	I-77 (43 miles), I-485 (24) miles
Rail	None
Air	Charlotte Douglas International Airport - 48 miles (FTZ-57)
Nearest Port	75 miles



Kim Burch, Executive Director • Chesterfield County Economic Development
843-623-6500 (office) • 843-680-0282 (cell) • kburchatccc@shtc.net