

AVAILABLE SITE

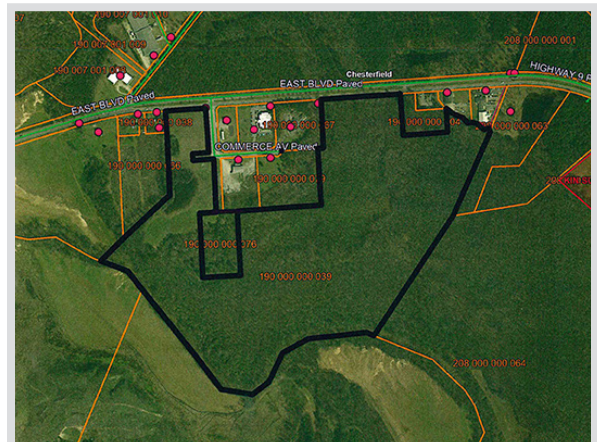


700 West Blvd
Chesterfield, SC 29709
843-623-6500
www.chesterfieldcountysc.org

CHESTERFIELD COMMERCE PARK



Location	Highway 9, Chesterfield, SC 29709
Purchase Price	\$25,000 - \$50,000/acre
Site Size	139 acres
Water	Chesterfield County Rural Water - 6" line
Sewer	Town of Chesterfield - 8" line
Electricity	Duke Energy Progress
Natural Gas	Dominion Energy
Fiber	Sandhill Telephone Cooperative
Connectivity	
Highway	Highway 9 (4 lanes)
Interstate	I-20 (43 miles)
Rail	None
Air	Florence Regional Airport - 53 miles
Nearest Port	47 miles Inland Port Dillon, SC



Kim Burch, Executive Director • Chesterfield County Economic Development
843-623-6500 (office) • 843-680-0282 (cell) • kburch@chesterfieldcountysc.com