

# AVAILABLE SITE

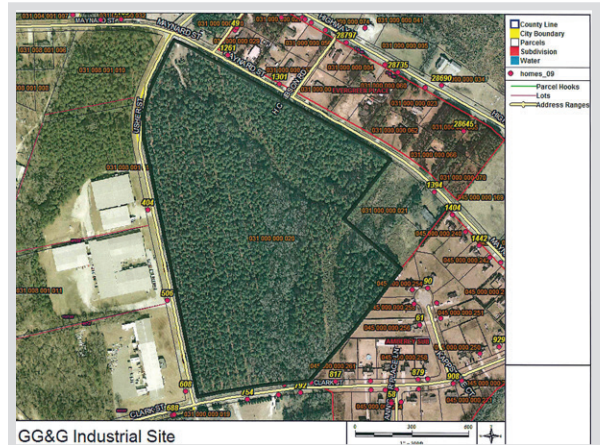


700 West Blvd  
Chesterfield, SC 29709  
843-623-6500  
[www.chesterfieldcountysc.org](http://www.chesterfieldcountysc.org)

## GG&G INDUSTRIAL SITE



<b>Location</b>	Usher Street, Pageland, SC 29728
<b>Purchase Price</b>	\$10,000 - \$15,000/acre
<b>Site Size</b>	38 acres
<b>Water</b>	Town of Pageland - 8" line
<b>Sewer</b>	Town of Pageland - 8" line
<b>Electricity</b>	Duke Energy Progress & Lynchess River Electric Cooperative
<b>Natural Gas</b>	Dominion Energy
<b>Fiber</b>	Sandhill Telephone Cooperative
<b>Connectivity</b>	
<b>Highway</b>	Highway 151 (4 lanes)
<b>Interstate</b>	I-77 (41 miles)
<b>Rail</b>	None
<b>Air</b>	Charlotte Douglas International Airport - 55 miles (FTZ-57)
<b>Nearest Port</b>	75 miles



**Kim Burch, Executive Director • Chesterfield County Economic Development**  
843-623-6500 (office) • 843-680-0282 (cell) • [kburch@chesterfieldcountysc.com](mailto:kburch@chesterfieldcountysc.com)