

AVAILABLE SITE

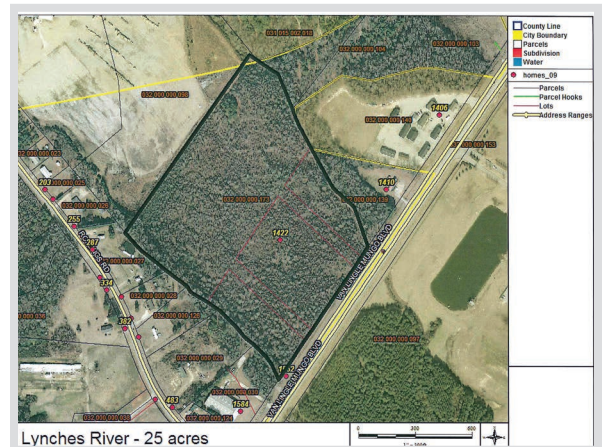


105 Green Street
Chesterfield, SC 29709
843-623-6500
www.chesterfieldcountysc.org

LYNCHES RIVER - 25 ACRES



Location	1422 Highway 151, Pageland, SC 29728
Purchase Price	\$10,000 - \$16,000/acre
Site Size	25 acres, 45 additional acres available
Water	Chesterfield County Rural Water - 8" line
Sewer	Town of Pageland - 10" line
Electricity	Lynches River Electric Cooperative
Natural Gas	Dominion Energy
Fiber	Sandhill Telephone Cooperative
Connectivity	
Highway	Highway 151 (4 lanes)
Interstate	I-77 (42 miles)
Rail	None
Air	Charlotte Douglas International Airport - 51 miles (FTZ-57)
Nearest Port	75 miles



Kim Burch, Executive Director • Chesterfield County Economic Development
843-623-6500 (office) • 843-680-0282 (cell) • kburchatccc@shtc.net