

AVAILABLE SITE

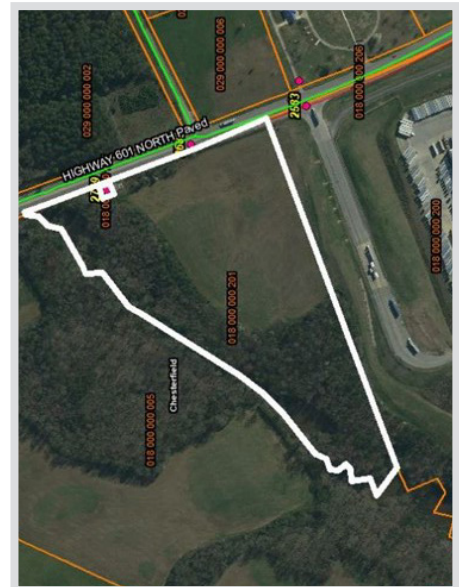


700 West Blvd
Chesterfield, SC 29709
843-623-6500
www.chesterfieldcountysc.org

LYNCHES RIVER INDUSTRIAL PARK



Location	US 601 North/2689 Hwy. 601 N, Pageland, SC 29728
Purchase Price	\$9,500/acre
Site Size	23 acres
Water	Chesterfield County Rural Water - 6" line
Sewer	Town of Pageland - 8" line
Electricity	Lynches River Electric Cooperative
Natural Gas	Dominion Energy
Fiber	Sandhill Telephone Cooperative
Connectivity	
Highway	US 601 North (4 Lanes)
Interstate	I-77 (44 miles)
Rail	n/a
Air	Charlotte/Douglas International - 47 Miles
Nearest Port	Inland Port Dillon - 78 miles



Kim Burch, Executive Director • Chesterfield County Economic Development
843-623-6500 (office) • 843-680-0282 (cell) • kburch@chesterfieldcountysc.com